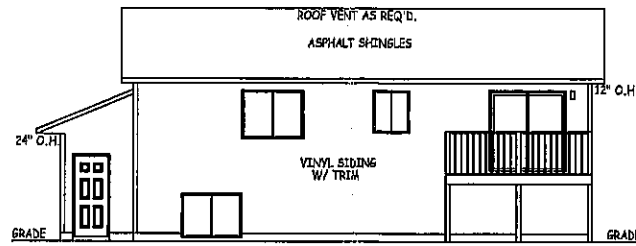


RIGHT ELEVATION

1/16" = 1'-0"

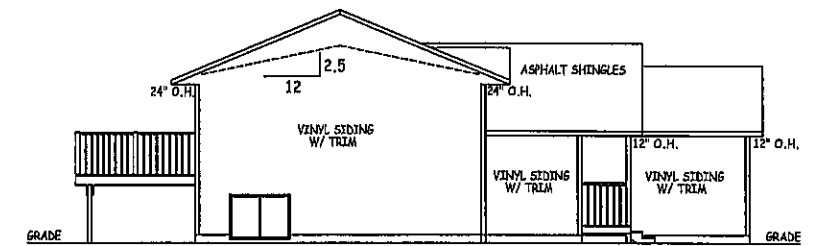
* FIELD VERIFY STEP-FOOTINGS & GRADES.



REAR ELEVATION

1/16" = 1'-0"

* FIELD VERIFY STEP-FOOTINGS & GRADES.



LEFT ELEVATION

1/16" = 1'-0"

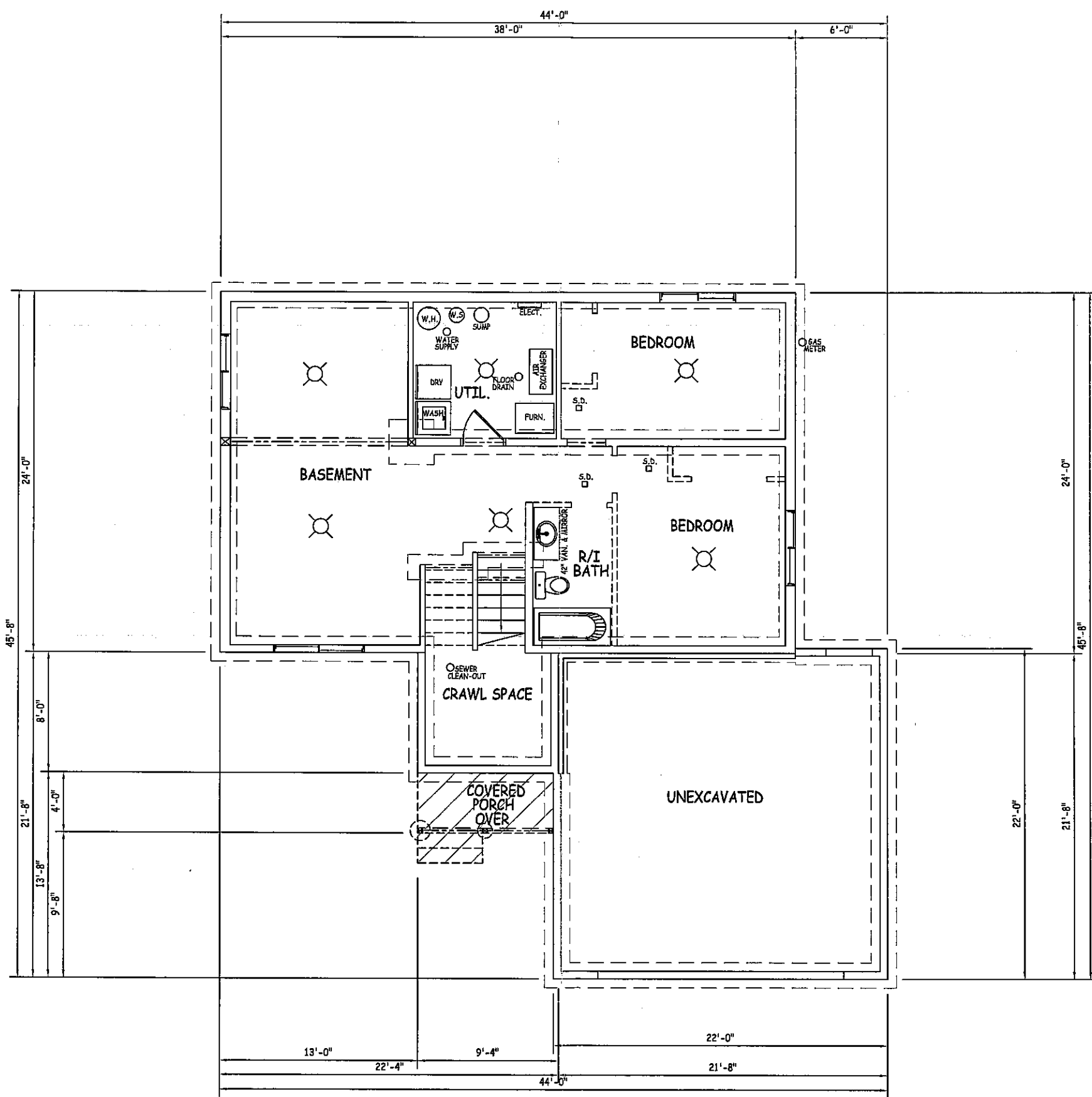
* FIELD VERIFY STEP-FOOTINGS & GRADES.



FRONT ELEVATION

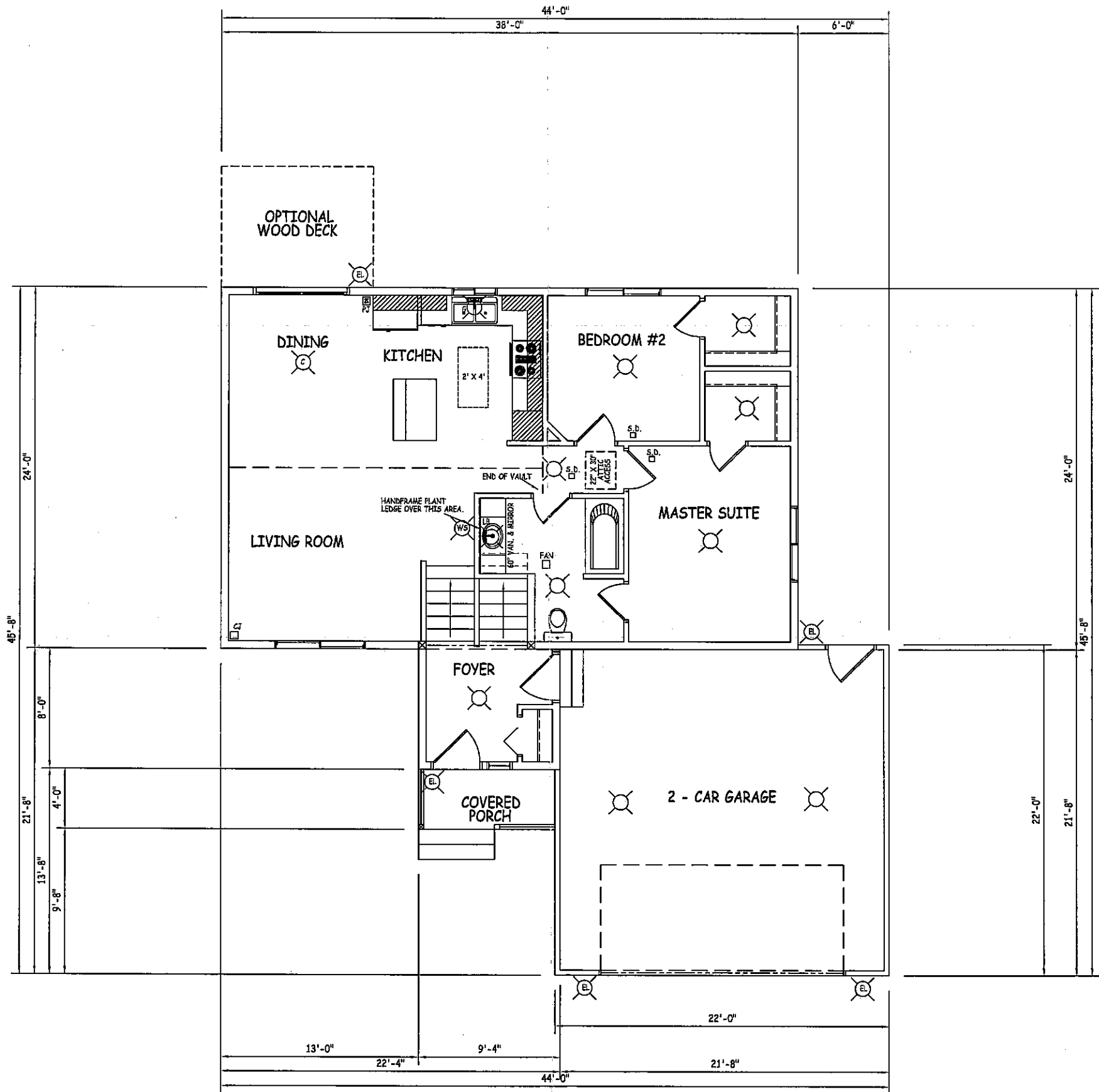
1/8" = 1'-0"

HILLTOP LUMBER, Inc.	
GLENWOOD, MN (320) 634-5386	ALEXANDRIA, MN (320) 763-9663
AS NOTED	REVISION STEVE
DATE: 3-18-04	
CAMBRIDGE I	
1 OF 4	



BASEMENT PLAN
 1/8" = 1'-0"

UNFINISHED	
HILLTOP LUMBER, Inc.	
GLENWOOD, MN (320) 634-5386	ALEXANDRIA, MN (320) 763-9663
SCALE: AS NOTED	DRAWN BY: STEVE
DATE: 3-18-04	
CAMBRIDGE I / ELECTRICAL	
	2 OF 4



MAIN LEVEL FLOOR PLAN

1/8" = 1'-0"

987 SQ. FT.

HILLTOP LUMBER, Inc.		
GLENWOOD, MN (320) 634-5386		ALEXANDRIA, MN (320) 763-9663
AS NOTED		DATE BY STEVE
3-18-04		
CAMBRIDGE I / ELECTRICAL		
		3 OF 4